

data sheet

# 73A-100-A series

carbon steel ball valve 1/4" - 1"



### features

- forged construction
- raised handle stops
- blowout-proof stem design
- adjustable packing gland
- zinc phosphate corrosion protection
- fire safe to API 607 (requires -24 suffix)
- AAR approved #E999032
- meets NACE MR0175 (2000) & MR0103 (2012)
- manufactured in the USA - AIS, ARRA, BABA and BAA compliant (requires -UA suffix)

### description

The "Apollo"® 73A-100-A model ball valve 1/4" to 1" features female NPT thread, 2000 CWP (psi). Cold non-shock with 150 psi saturated steam and vacuum service to 29 inches Hg. MSS SP-110

### size range

- 1/4" - 1"

### connections

- threaded

### configurations

- 73A-100-A series - standard
- 73A-140 series - 316 ss ball & stem

### approvals

- MSS SP-110 ball valves
- NACE MR0175 (2000) & MR0103 (2003) compliant
- Buy American Act (BAA)
- Build America Buy America (BABA) Act
- American Iron and Steel Act (AIS)

component	material
body	A105-carbon steel
retainer	A108-125
ball	ASTM A108, carbon steel, chrome plated or A276-316 stainless steel
seat (2)	RPTFE
stem	ASTM A108-carbon steel or A276-316 stainless steel
gland nut	A108-carbon steel
stem packing	MPTFE
stem bearing	RPTFE
lever and grip	steel, zinc plated with vinyl
body seal	RPTFE (1/2" to 2")
lever nut	steel, zinc plated

performance rating			
CWP	SWP	temperature	vacuum service
2000 psig	250 psig (maximum)	500°F (maximum temperature)	29 in. Hg



*this specification is provided for reference only. we reserve the right to change any portion of this specification without notice and without incurring obligation to make such changes to Aalberts integrated piping systems products previously or subsequently sold.*

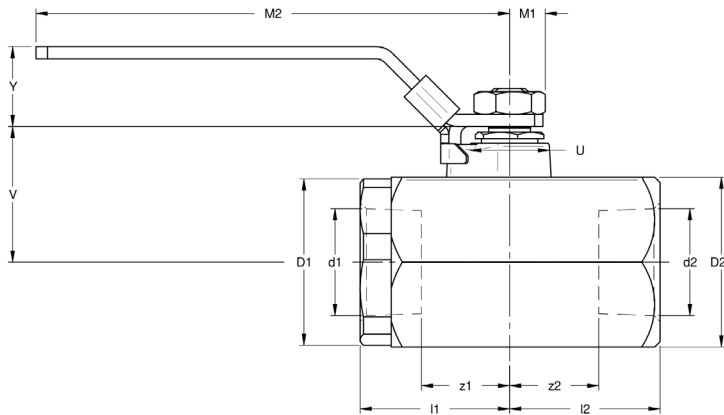
### Aalberts integrated piping systems

10715 Sikes Place / suite 200 / Charlotte / NC / 28277

[aalberts-ips.us](http://aalberts-ips.us)

job name	
job location	
engineer	
contractor	
tag	
PO#	
rep	
wholesaler dist	

data sheet



dimensions

part number	size	bore size	d1	d2	l1	l2	z1	z2	M1	M2	V	Y	weight	Cv
73A-101-27	¼"	0.37"	0.54"	0.54"	1.02"	1.03"	0.62"	0.63"	0.38"	4.15"	1.06"	0.89"	0.58 lbs	8.4
73A-102-27	⅜"	0.37"	0.68"	0.68"	1.02"	1.03"	0.62"	0.63"	0.38"	4.15"	1.06"	0.89"	0.55 lbs	7.2
73A-103-27A	½"	0.50"	0.84"	0.84"	1.12"	1.11"	0.56"	0.58"	0.38"	4.15"	1.12"	0.89"	0.63 lbs	15
73A-104-27A	¾"	0.68"	1.05"	1.05"	1.47"	1.50"	0.85"	0.88"	0.37"	5.28"	1.38"	0.92"	1.27 lbs	30
73A-105-27A	1"	0.87"	1.32"	1.32"	1.66"	1.67"	0.98"	0.99"	0.37"	5.28"	1.50"	0.92"	2.20 lbs	43

options

option	component	size
(-P-27)	BSPP (parallel) thread connection	all
(-T-27)	BSPT (tapered) thread connection	all
(-02)	stem grounded	all
(-07)	steel tee handle	¼" to 1 ½"
(-08)	90° reversed stem	all
(-10)	ss lever & nut	all
(-14)	side vented ball (uni-directional)	all
(-15)	wheel handle, steel	¼" to 1 ½"
(-16)	chain lever - vertical	¾" to 2"
(-21)	UHMWPE trim (non-PTFE)	all
(-24)	graphite packing, PTFE body seal, RPTFE bearing (API 607, 6th edition, ISO 10497:2010)	all
(-27)	standard configuration, ss latch-lock lever & nut	all
(-30)	cam-lock & grounded	all
(-32)	ss tee handle & nut	all

option	component	size
(-35)	PTFE trim	all
(-39)	SS hi-rise locking wheel handle, SS nut	all
(-40)	cyl-loc and grounded	all
(-45)	less lever & nut	all
(-47)	SS latch lock oval handle	all
(-48)	SS oval handle (no latch) & nut	all
(-50)	2 ¼" CS locking stem extension	all
(-52)	two tack welds	all
(-56)	multifill seats	all
(-58)	chain lever - horizontal	¾" to 2"
(-60)	static grounded ball & stem	all
(-64)	250# steam trim (MPTFE seats & packing)	all
(-67)	cleaned for industrial gas - cs valves	all
(-UA)	AIS (American iron & steel) compliant	all

data sheet

# 73A-100-A series

carbon steel ball valve 1 1/4" - 2"



**description**

The "Apollo"® 73A-100-A model ball valve 1 1/4" to 2" features female NPT thread, 1500 CWP (psi). Cold non-shock with 150 psi saturated steam and vacuum service to 29 inches Hg. MSS SP-110 compliant.

**size range**

- 1 1/4" - 2"

**connections**

- threaded

**configurations**

- 73A-100-A series - standard
- 73A-140 series - 316 ss ball & stem

**approvals**

- MSS SP-110 ball valves
- NACE MR0175 (2000) & MR0103 (2003) compliant
- Buy American Act (BAA)
- Build America Buy America (BABA) Act
- American Iron and Steel Act (AIS)

**features**

- forged construction
- raised handle stops
- blowout-proof stem design
- adjustable packing gland
- zinc phosphate corrosion protection
- fire safe to API 607 (requires -24 suffix)
- AAR approved #E999032
- manufactured in the USA - AIS, ARRA, BABA and BAA compliant (requires -UA suffix)

component	material
body	A105-carbon steel
retainer	A108-125
ball	ASTM A108, carbon steel, chrome plated or A276-316 stainless steel
seat (2)	RPTFE
stem	ASTM A108-carbon steel or A276-316 stainless steel
gland nut	A108-carbon steel
stem packing	MPTFE
stem bearing	RPTFE
lever and grip	steel, zinc plated with vinyl
body seal	RPTFE (1/2" to 2")
lever nut	steel, zinc plated

performance rating			
CWP	SWP	temperature	vacuum service
1500 psig	250 psig (maximum)	500°F (maximum tempature)	29 in. Hg



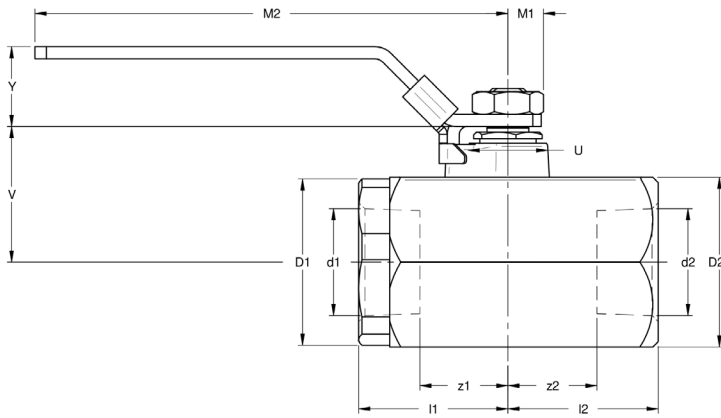
*this specification is provided for reference only. we reserve the right to change any portion of this specification without notice and without incurring obligation to make such changes to Aalberts integrated piping systems products previously or subsequently sold.*

**Aalberts integrated piping systems**

10715 Sikes Place / suite 200 / Charlotte / NC / 28277  
[aalberts-ips.us](http://aalberts-ips.us)

job name	
job location	
engineer	
contractor	
tag	
PO#	
rep	
wholesaler dist	

data sheet



dimensions

part number	size	bore size	d1	d2	l1	l2	z1	z2	M1	M2	V	Y	weight	Cv
73A-106-27	1 ¼"	1.00"	1.66"	1.66"	2.00"	1.99"	1.29"	1.28"	0.57"	6.26"	1.98"	1.04"	3.74 lbs	48
73A-107-27	1 ½"	1.25"	1.90"	1.90"	2.17"	2.18"	1.46"	1.43"	0.57"	6.26"	2.18"	1.04"	5.30 lbs	84
73A-108-27	2"	2.00"	2.38"	2.38"	2.73"	2.70"	1.86"	1.89"	0.57"	6.26"	2.36"	1.04"	8.03 lbs	108

options

option	component	size
(-P-27)	BSPP (parallel) thread connection	all
(-T-27)	BSPT (tapered) thread connection	all
(-02)	stem grounded	all
(-07)	steel tee handle	¼" to 1 ½"
(-08)	90° reversed stem	all
(-10)	ss lever & nut	all
(-14)	side vented ball (uni-directional)	all
(-15)	wheel handle, steel	¼" to 1 ½"
(-16)	chain lever - vertical	¾" to 2"
(-21)	UHMWPE trim (non-PTFE)	all
(-24)	graphite packing, PTFE body seal, RPTFE bearing (API 607, 6th edition, ISO 10497:2010)	all
(-27)	standard configuration, ss latch-lock lever & nut	all
(-30)	cam-lock & grounded	all
(-32)	ss tee handle & nut	all

option	component	size
(-35)	PTFE trim	all
(-39)	SS hi-rise locking wheel handle, SS nut	all
(-40)	cyl-loc and grounded	all
(-45)	less lever & nut	all
(-47)	SS latch lock oval handle	all
(-48)	SS oval handle (no latch) & nut	all
(-50)	2 ¼" CS locking stem extension	all
(-52)	two tack welds	all
(-56)	multifill seats	all
(-58)	chain lever - horizontal	¾" to 2"
(-60)	static grounded ball & stem	all
(-64)	250# steam trim (MPTFE seats & packing)	all
(-67)	cleaned for industrial gas - cs valves	all
(-UA)	AIS (American iron & steel) compliant	all

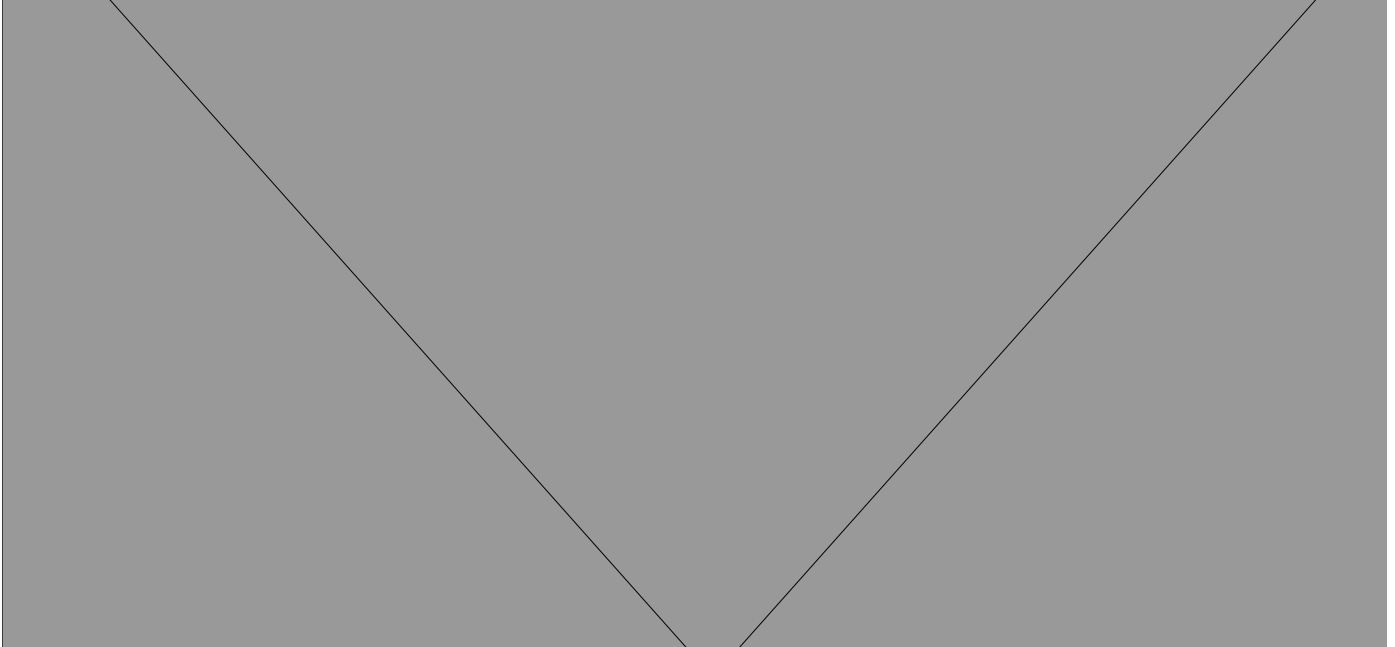
data sheet

pressure/temperature ratings  
engineering data

2000 CWP

(CS) ASTM A216-WCB or ASTM A105

graph 1



1500 CWP

(CS) ASTM A216-WCB or ASTM A105

graph 2

